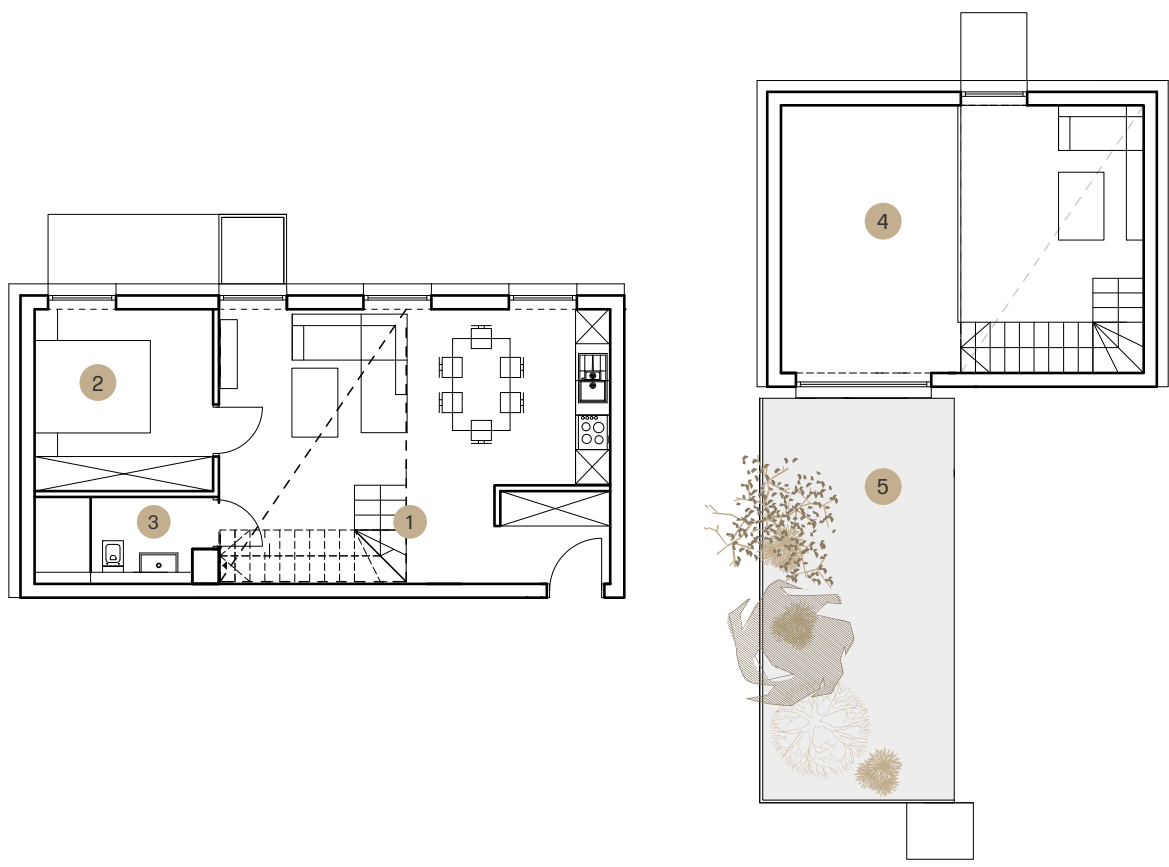


Apartament

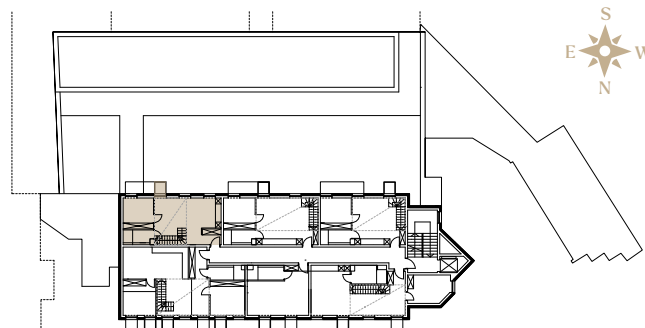
# A25

Piętro 3  
Powierzchnia 61.2 m<sup>2</sup>  
Liczba pokoi 2

| Lp. | Pomieszczenie   | Powierzchnia        |
|-----|-----------------|---------------------|
| 1   | Salon + kuchnia | 31.8 m <sup>2</sup> |
| 2   | Sypialnia       | 9.7 m <sup>2</sup>  |
| 3   | Łazienka        | 4.6 m <sup>2</sup>  |
| 4   | Antresola       | 15.1 m <sup>2</sup> |
| 5   | Taras           | 24.7 m <sup>2</sup> |



Rzut piętra



Antresola + Taras

